

Tarchi

# Runs and Opening Dance

Piano

4/30/2014

Go who, Liuw in Place & Follow spot on Liuw

Allegro ♩ = 175-180



Hey ya      Hey yah      Hey yeh      Hey yah

### PERCUSSIVE STRINGS Dragon Serpentine

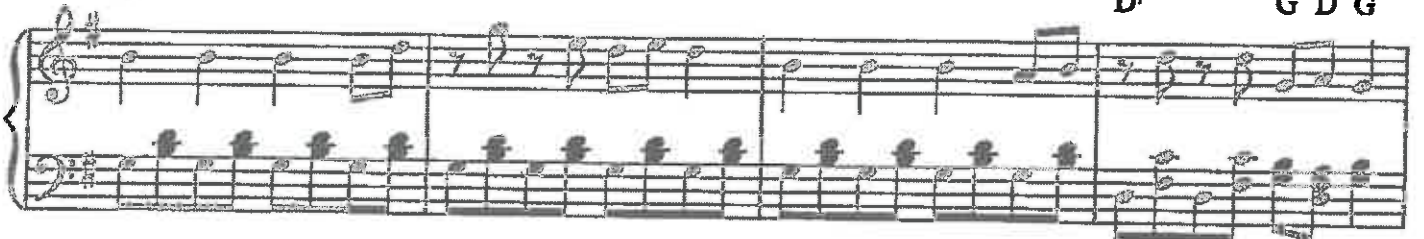
6 G

D7 G D G



10 G

D7 G D G

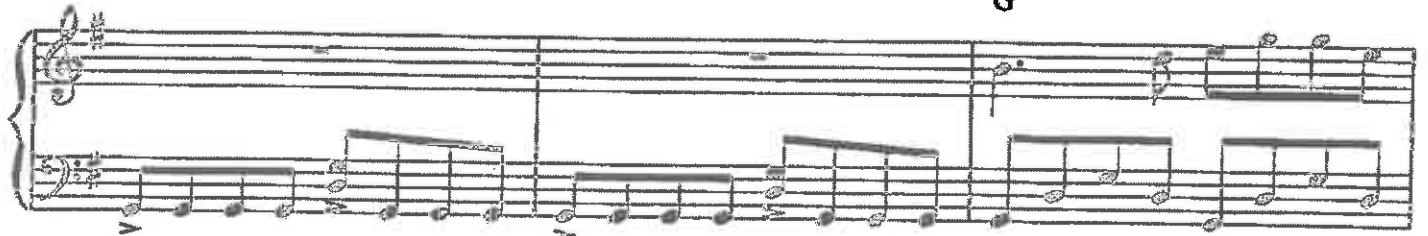


### DRUM TRANSITION Olivia's Entrance

### MO LI HUA MELODY NO VOCALS

G

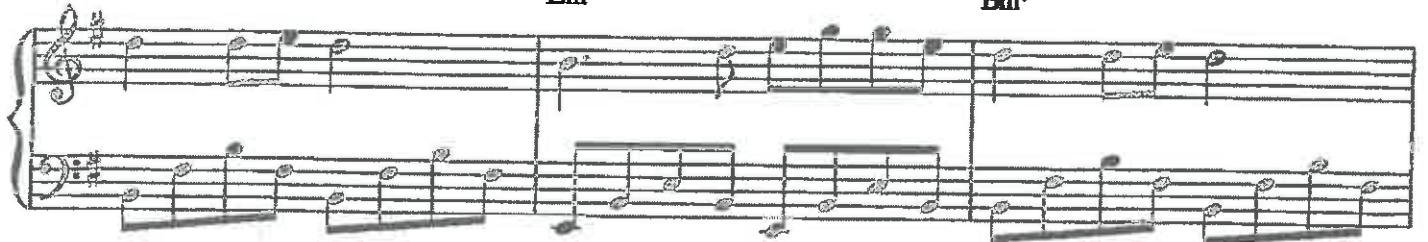
14



17 Bm7

Bm7

Bm7



Piano

Lion and Firework's Circle

2  
20 Cmaj9 Bm(sus4) Em7 Am9 D7 G

B SECTION OF MELODY

24 Cmaj7 Bm Em7 Cmaj7

27 Bm C G/B Am7 D7

PERCUSSIVE STRINGS  
Swat Runs and Leaps

30 G D7 G D G

34 G D7 G D G

38 DRUM SECTION

Musical notation for measures 38-41, featuring a drum section with a treble clef and a key signature of one sharp (F#). The notation includes various rhythmic patterns and rests.

42

Musical notation for measures 42-45, continuing the drum section with a treble clef and a key signature of one sharp (F#).

B SECTION OF MELODY ACROBAT

46 Cmaj7

Bm

Em7

Cmaj7

Musical notation for measures 46-49, featuring a melody with a treble clef and a key signature of one sharp (F#). The notation includes various rhythmic patterns and rests.

RAMP UP

50 D(sus4)

G(sus2)

G7

Musical notation for measures 50-53, featuring a melody with a treble clef and a key signature of one sharp (F#). The notation includes various rhythmic patterns and rests.

MO LI HUA MELODY WITH VOCALS

Toicy Toe Tricky

54 C

Em7

Am7

Em7

Musical notation for measures 54-57, featuring a melody with a treble clef and a key signature of one sharp (F#). The notation includes various rhythmic patterns and rests.

Piano

4

58 Fmaj9 Em(sus4) Am7 Dm9 G7 C

B SECTION OF MELODY

62 Fmaj7 Em Am7 Fmaj7 Em F C/E

Olivia Exit

66 Dm7 G7

PERCUSSIVE STRINGS  
CEL CRAZY RUNS REBOOT

68 C G7 C G C

72 C G7 C G C



Piano

76 D A7 D A D

80 D A7 D A D

TOTS  
SUBITO Lighter and new tempo slower...same tempo as Mongolian

84 G

86 C D G

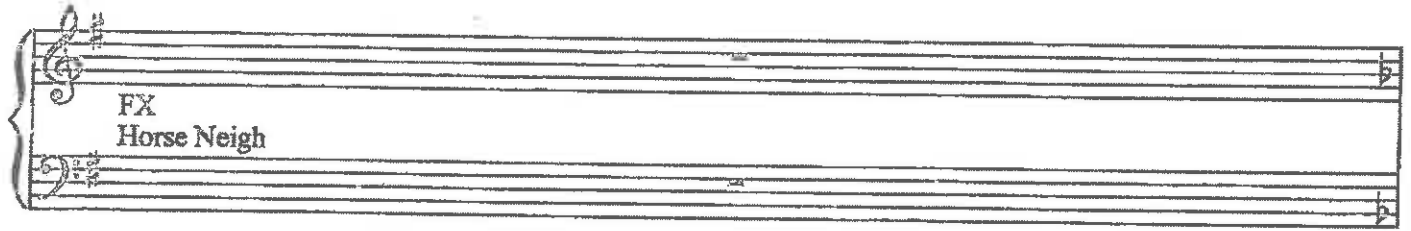
88 G

90 C D G

Piano

6

92

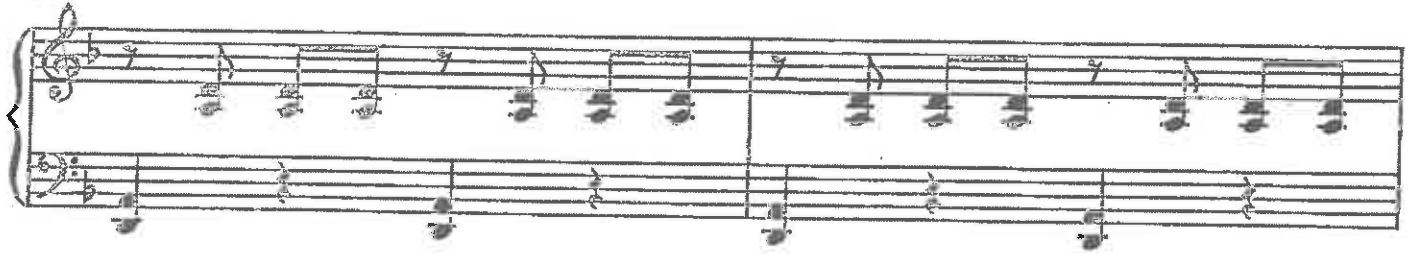


FX  
Horse Neigh

Musical notation for FX Horse Neigh, consisting of two staves (treble and bass clef) with a key signature of one sharp (F#) and a common time signature (C). The notation is mostly blank, indicating a sound effect.

93

TRANSITION TO MONGOLIA

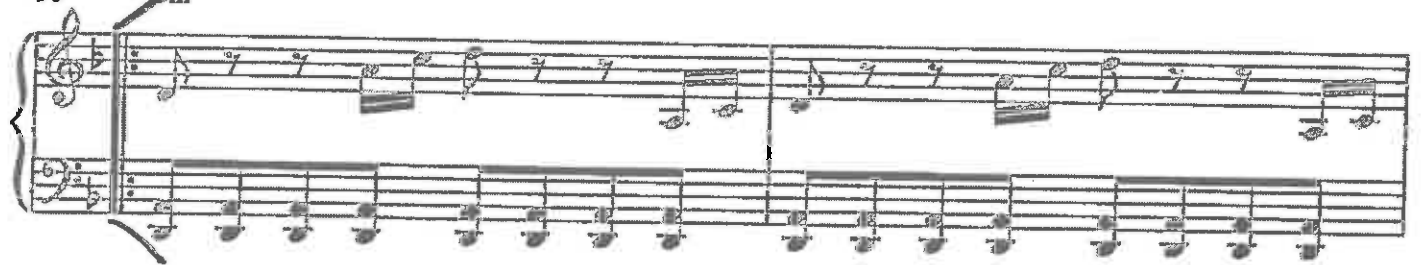


Musical notation for Transition to Mongolia, consisting of two staves (treble and bass clef) with a key signature of one sharp (F#) and a common time signature (C). The notation features a sequence of eighth and sixteenth notes in both hands.

HORSEY COMBO  
VERY STRONG

95

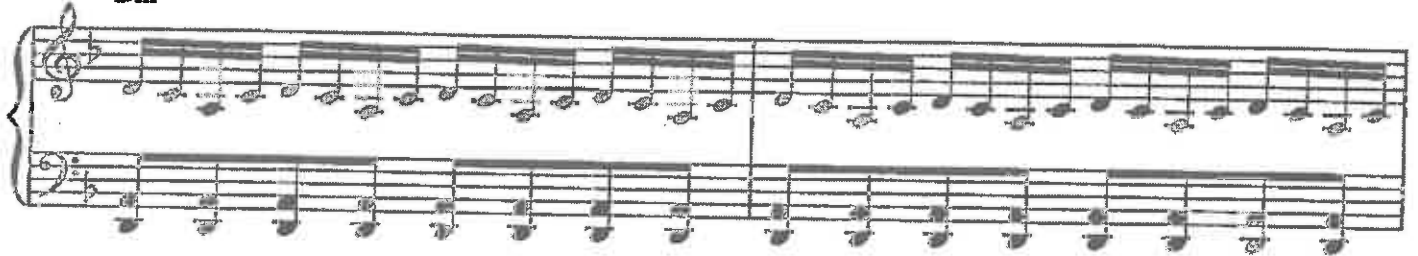
JIA  
Dm



Musical notation for Horsey Combo Very Strong, consisting of two staves (treble and bass clef) with a key signature of one sharp (F#) and a common time signature (C). The notation features a sequence of eighth and sixteenth notes in both hands, with a 'JIA' annotation above the first measure.

97

GALLOP  
Dm



Musical notation for Gallop, consisting of two staves (treble and bass clef) with a key signature of one sharp (F#) and a common time signature (C). The notation features a sequence of eighth and sixteenth notes in both hands, with a 'Dm' annotation above the first measure.

99

SNOOTY  
Dm

Gm



Musical notation for Snooty, consisting of two staves (treble and bass clef) with a key signature of one sharp (F#) and a common time signature (C). The notation features a sequence of eighth and sixteenth notes in both hands, with 'Dm' and 'Gm' annotations above the first and second measures respectively.

101 Gm

Musical notation for exercise 101, Gm chord. It consists of two staves: a treble clef staff with a melody of eighth and sixteenth notes, and a bass clef staff with a steady eighth-note accompaniment. The piece concludes with a double bar line and repeat dots.

WRISTS

103 Dm

Gm A

Musical notation for exercise 103, WRISTS. It consists of two staves. The treble staff has a melody with eighth and sixteenth notes. The bass staff has a steady eighth-note accompaniment. The exercise is divided into four measures, with the final two measures marked with Gm and A chords.

Sharp Wrists

107 Dm

Musical notation for exercise 107, Sharp Wrists. It consists of two staves. The treble staff has a melody with eighth and sixteenth notes. The bass staff has a steady eighth-note accompaniment. The exercise is divided into four measures.

111 Jingle Bells

Musical notation for exercise 111, Jingle Bells. It consists of two staves. The treble staff has a melody with eighth and sixteenth notes. The bass staff has a steady eighth-note accompaniment. The exercise is divided into four measures.

Robbie 1

115 Dm

Gm A

Musical notation for exercise 115, Robbie 1. It consists of two staves. The treble staff has a melody with eighth and sixteenth notes. The bass staff has a steady eighth-note accompaniment. The exercise is divided into four measures, with the final two measures marked with Gm and A chords.

Piano

8

119 Dm Gm A Dm Gm A Dm

123 Dm

127 Fireworks

129 Reach and Melt

not too long

JIA

NO play off / Arcturus place allows for exit