

COE

Groups in place on stage stage back

FREEDOM (3)

By Langston Hughes

*Some folks think
By burning churches
They burn
Freedom.*

*Some folks think
By imprisoning me
They imprison
Freedom.*

*Some folks think
By killing a man
They kill*

Freedom - To music intro (A)

*But Freedom
Stands up and laughs
In their faces
And says,
No -
Not so!
No!*

FREEDOM

Music - Emerson Harper

Words - Langston Hughes

OPENING: POEM

1) "Some folks

Arranged by Neal Kirkwood

2)

3)

A Slow Blues

Musical notation for the first staff of section A, featuring a treble clef, key signature of two flats, and a 12/8 time signature. The melody consists of eighth and quarter notes with some triplets. Chords F- and Bb- are indicated above the staff.

Musical notation for the second staff of section A, featuring a treble clef, key signature of two flats, and a 12/8 time signature. The melody continues with eighth and quarter notes. Chords C7, F-7, Bb-7, F-7, D67, and C7 are indicated above the staff.

"But Freedom stands up
and laughs in their faces and says no!"

Musical notation for the third staff of section A, featuring a treble clef, key signature of two flats, and a 12/8 time signature. The melody consists of quarter notes. Chords F-, C7, D67, No, D67, and C7 are indicated above the staff.

B

Musical notation for the first staff of section B, featuring a treble clef, key signature of two flats, and a 12/8 time signature. The melody consists of eighth and quarter notes. A note is marked as an optional eighth note (opt 8vb).

Musical notation for the second staff of section B, featuring a treble clef, key signature of two flats, and a 12/8 time signature. The melody consists of quarter notes. Chords F6 and Eb are indicated above the staff. A bass line is present below the staff.

Musical notation for the third staff of section B, featuring a treble clef, key signature of two flats, and a 12/8 time signature. The melody consists of quarter notes. Chords F6 and Eb are indicated above the staff. A bass line is present below the staff.

Handwritten musical notation for the first system. The treble clef staff contains two whole notes with a slur above them, followed by two measures of rests. The bass clef staff contains a rhythmic pattern of eighth notes, with a final measure containing a triplet of eighth notes.

Handwritten musical notation for the second system. The treble clef staff contains two whole notes with a slur above them, followed by two measures of rests. The bass clef staff contains a rhythmic pattern of eighth notes, with a final measure containing a triplet of eighth notes.

Handwritten musical notation for the third system. It includes a circled 'C' and 'F' chord symbol above the treble staff. The bass clef staff has the label 'Bass' and contains a rhythmic pattern of eighth notes. A 'sim...' annotation is present above the treble staff. A circled 'C7' chord symbol is located below the bass staff.

Handwritten musical notation for the fourth system. It features a circled 'F' chord symbol above the first measure and a circled 'Bb7' chord symbol above the second measure. The treble staff contains eighth notes, and the bass staff contains a rhythmic pattern of eighth notes.

Handwritten musical notation for the fifth system. It includes 'F' and 'C7' chord symbols above the treble staff. The treble staff contains eighth notes, and the bass staff contains a rhythmic pattern of eighth notes.

Handwritten musical notation for the sixth system. It includes a 'rit' (ritardando) marking above the bass staff and a '(piano)' marking above the treble staff. The treble staff contains a triplet of eighth notes. The bass staff contains a rhythmic pattern of eighth notes.

Handwritten musical notation for a saxophone part. The key signature is B-flat major (two flats). The notation includes several staves with notes and rests, and various chord symbols written above the staves: F^- , F^- , Bb^- , F^- , Db , C^7 , F^- , C^7 , Bb^- , F^- , rit , Db^- , and C^7 . There are also some rhythmic markings like "r37" and a "(sax)" label.

Handwritten musical notation for a piano accompaniment. It consists of two staves. The upper staff has notes and rests, with chord symbols AB^o and A^o written above. The lower staff has notes and rests, with a double bar line and a slash indicating a section change.

Handwritten musical notation for a piano accompaniment. It consists of two staves. The upper staff has notes and rests, with chord symbols Bb^o and B^o written above. The lower staff has notes and rests, with a double bar line and a slash indicating a section change.

Handwritten musical notation for a duet section. It consists of two staves. The first staff has notes and rests, with a box containing the letter "E" and the word "DUET" written above. The second staff has notes and rests, with a C^7 chord symbol written above.

Handwritten musical notation for a piano accompaniment. It consists of two staves. The upper staff has notes and rests, and the lower staff has notes and rests. There are some markings above the notes, possibly indicating dynamics or phrasing.

c)

Bass sim ...

F⁷ (sax solo)

E^b7

D^b7

BREAKS

c)

D^b7

(samba)

c)

D^b7

Handwritten musical notation on two staves. The top staff is in treble clef and the bottom in bass clef. Chords F and C7 are written above the first two measures. The music consists of eighth and quarter notes.

Handwritten musical notation on two staves. Chords F and Bb are written above the first two measures. The music consists of eighth and quarter notes.

Handwritten musical notation on two staves. Chords F, G7, C7, and C7 are written above the first four measures. The music consists of eighth and quarter notes.

Handwritten musical notation on two staves. Chords F and Bb are written above the first two measures. The music consists of eighth and quarter notes.

Handwritten musical notation on two staves. Chords F, A7, D7, G7, C, and F are written above the first six measures. The music consists of eighth and quarter notes.

F SWING (TRIO?)

Handwritten musical notation on two staves. The music consists of eighth and quarter notes.

Handwritten musical notation on two staves. Chords G7 and C7 are written above the first two measures. The music consists of eighth and quarter notes.

Handwritten musical notation on two staves. Chords F and Bb are written above the first two measures. The music consists of eighth and quarter notes.

Handwritten musical notation on two staves. Chords F, A7, D7, G7, C7, and F are written above the first six measures. The music consists of eighth and quarter notes.

G DIAGONAL C7

Handwritten musical notation on two staves. The music consists of eighth and quarter notes.

[H]

C7b9 piano solo (ala Caravan)

BASS

F-

RUNS
C7b9 Sax Solo

F-

E \flat 7

D \flat 7

C7 Break (Piano melody)

[I] BUILD (1st step)
F Sax obbligato

F

B \flat 7

F

C7

D \flat 7

Chord: Gb Eb

Chord: Gb Ab7 Db7

Chord: Gb Cb

Chord: Gb Bb7 Eb7 Ab7 D1 Gb

J Egyptian

3X'S WALKS 4- poses
Drum solo wiggle down - turn 7 & 8

(Drums)

FINALE SWING

8

F

F Bb

F A1 D1 G1 C1 F1

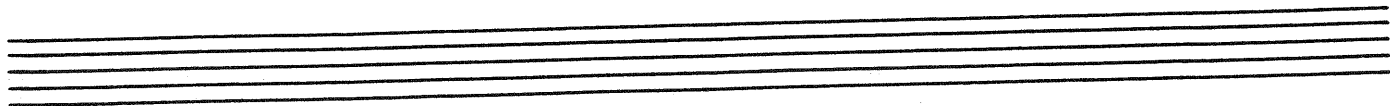
HAPPY DEP F Bb7

F G1 C1

F Bb7 B°

3x's

Drum solo dim



L

Handwritten musical notation for the first system. It consists of a grand staff with a treble clef on the upper staff and a bass clef on the lower staff. The upper staff contains chords and rests, with some notes written in a shorthand style. The lower staff contains a melodic line with eighth and sixteenth notes. A dynamic marking 'p' is present in the first measure.

Handwritten musical notation for the second system. It features a single treble clef staff with chords and rests. The text "Bass sim..." is written below the staff, indicating a bass line simulation.

Handwritten musical notation for the third system. It features a single treble clef staff with chords and rests.

Handwritten musical notation for the fourth system. It features a single treble clef staff with chords and rests.

Handwritten musical notation for the fifth system. It features a single treble clef staff with chords and rests.

Handwritten musical notation for the sixth system. It features a single treble clef staff with chords and rests.

Handwritten musical notation for the seventh system. It features a single treble clef staff with chords and rests.

Empty musical staff.

Empty musical staff.

Empty musical staff.

Empty musical staff.